

ERIC - Educational Resource Information Center. Indexes journal articles, dissertations, research reports, and other information in education.

SocINDEX - This comprehensive database can be used to find descriptions, reviews, applications of tests, and possible copies of tests in the field of sociology.

Need help accessing or searching within the databases? Call the Library, 1-800-451-5724.

Internet Resources

Finding information about Psychological Tests: Frequently Asked Questions-

The American Psychological Associations FAQ's on psychological tests. Serves as a guide to locate information on published and unpublished tests in the field of Psychology.

<http://www.apa.org/science/faq-findtests.html>

Buros Institute-

Publishers of the Mental Measurements Yearbook and Tests in Print. This site provides instruction on how to use MMY and TIP and reviews on published tests.

<http://www.unl.edu/buros/bimm/index.html>

Educational Testing Services Network-

Provides information on and samples of educational testing including placement tests and college admissions.

<http://www.ets.org>

Locating Additional Information

Delaware Library Catalog- Search the Library online catalog for additional resources on tests and measurements.

NetLibrary- Collection of over 5,000 eBooks. Search for full-text, electronic books covering a variety of subjects.

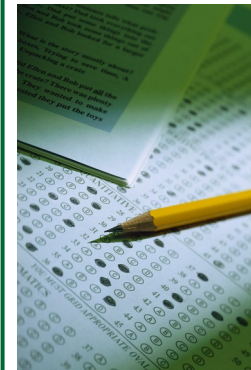
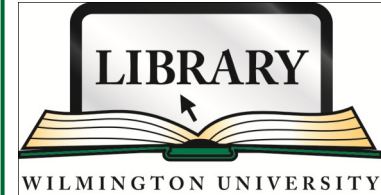
Some things to keep in mind...

- ◆ Actual print version of tests and instruments may not be readily available.
- ◆ Many tests are copyrighted. In such cases photocopying is prohibited. In order to use a copyrighted test you will need to obtain written permission from the author or publisher.
To locate a test author :
- ◆ Search in *Mental Measurements with Tests in Print* database for the author's organization & address.
- ◆ Contact the publisher that holds the copyright to the original test and request permission to use the material.

More helpful QuickGuides are available from the Library website
www.wilmu.edu/library/quickguides

For further information, please call

1-800-451-5724



Tests and Measurements Guide

WILMU.EDU/LIBRARY

Finding Information on Tests and Measurements

Locating Published Tests

Mental Measurements Yearbook (MMY)

[Z5814.P8 B932](#) [Reference-NC,WGC,G,D]*

MMY provides reviews as well as reliability, validity and scoring information about commercially available, standardized tests written in the English language. Disciplines include education, psychology, personality, intelligence, achievement, and vocational aptitude.

The full-text reviews contain a description of the administered test, materials used, purpose, intended population, and time needed to conduct the test.

Newer editions of MMY do not supersede the previous volumes. Newer editions supplement and cross reference information in the previous editions.

Most recent reviews of the tests can also be located electronically in the MMY database. (see "Library Databases")

How Do I use It?

MMY can be located by name, title, acronym, subject, publisher, author or reviewer.

Tests in Print (TIP)

[Z5814.P8 B932](#) [Reference-NC,WGC,G,D]*

Tests in Print serves as a companion to the test reviews in the Mental Measurements Yearbook. TIP includes information on commercially available tests including: publisher information, reviewers, number of reviews it has received, test print status, and number of references on the construction, use and validity of the test. TIP does not contain critical reviews of tests.

How Do I Use It?

TIP can be searched alphabetically in sections according to test title, reviewer, publisher, subject, etc.

Test Critiques

[BF176.T419 V1-10](#) [Reference-NC,G]*

Includes critical reviews of tests in the fields of psychology, education, & business. In addition to critiques, information is provided on practical application, uses, and technical aspects of tests.

Tests : A Comprehensive Reference for Assessments in Psychology, Education, and Business

[BF176. T43 1997](#) [Reference-NC]*

Provides description of tests in the fields of education, business, psychology, and human resources. Information provided includes: author, scoring, population, purpose, and cost.

Comprehensive Handbook for Psychological Assessment

[BF176.C654 2004 V.1-4](#) [Reference-NC]*

Comprehensive collection providing information on intellectual and psychological tests including: intended population, purpose, legal and ethical concerns, and clinical applications.

Handbook of Psychological Assessment

[BF176 .G76 2003 EB](#) [electronic resource]

Reviews and provides information on how to administer tests and evaluate data.

* Items indicated as Reference books are non-circulating. Locations books are held: NC—New Castle, WGC—Wilson Graduate Center, G—Georgetown, D—Dover.

Research Databases

Locate scholarly journals, articles, and other resources on tests and measurements using the Library's Electronic Research Databases. To access the databases, simply visit the library homepage and click on 'Electronic Databases' beneath the 'Research' category. Off campus users will be prompted to log into Blackboard/WebCampus.

Mental Measurements Yearbook with Tests in Print - Electronic version of print-based product. Contains the most recent reviews of the tests and serves as a comprehensive bibliography to all known commercially available tests that are currently in print in the English language.

How do I use it?

Search database by test name (tn), author (au), acronym (ac), or keyword (kw).

PsycINFO - Over 2.3 million citations to resources.

How do I use it?

Search for studies using particular instruments. Select "Tests & Measures" (TM) from the search field drop-down box and enter keyword information in the search box.

CINAHL with Full Text - Index of over 520 full-text nursing & allied health journals.

How do I use it?

Search for instruments using either the "Instrumentation" (IN) or "Publication Type" (PT) fields.

MEDLINE - Contains abstracts of resources in all fields of medicine. Uses MESH (Medical Subject Headings).

How do I use it?

Use MESH headings such as: psychological tests, questionnaires, & process assessment.

Business Source Complete- Contains full-text information for approximately 2300 business publications.