

Wilmington University VPN Instructions

Information Technology, June 15, 2009

Contents

- Purpose
- Definitions
- Clientless access
- Client-based - AnyConnect

Purpose

Remote off-campus access to Wilmington University computing resources is obtained via an SSL-encrypted VPN (Virtual Private Network). All Wilmington University faculty, adjunct faculty and staff are permitted to access certain resources remotely.

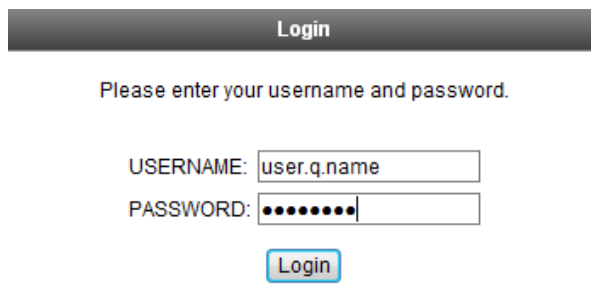
The VPN can be utilized when you are using a computer that is not directly connected--wired or wireless--to the University network, but does have a connection to the internet.

Definitions

- **Clientless**
 - Web browser based access to University systems. After connection, all University system transactions *within that browser window* are encrypted.
 - Recommended for public computers and personally-owned computers. Access to some University systems may not work properly depending on the configuration of the computer and your permissions on that computer.
 - Works best with Windows and Internet Explorer. We have had mixed results with combinations of the following: Mac, Firefox, Safari, Chrome, Windows 7, Internet Explorer 8.
- **Client-based**
 - AnyConnect client based access to University systems. After connection, all University system transactions *on your computer* are encrypted.
 - Recommended for University-owned laptops and personally-owned systems used regularly for work.

Clientless access

1. Confirm that the computer you are on has internet access
2. Open Internet Explorer and browse to <https://connect.wilmu.edu>
3. Enter your WU credentials



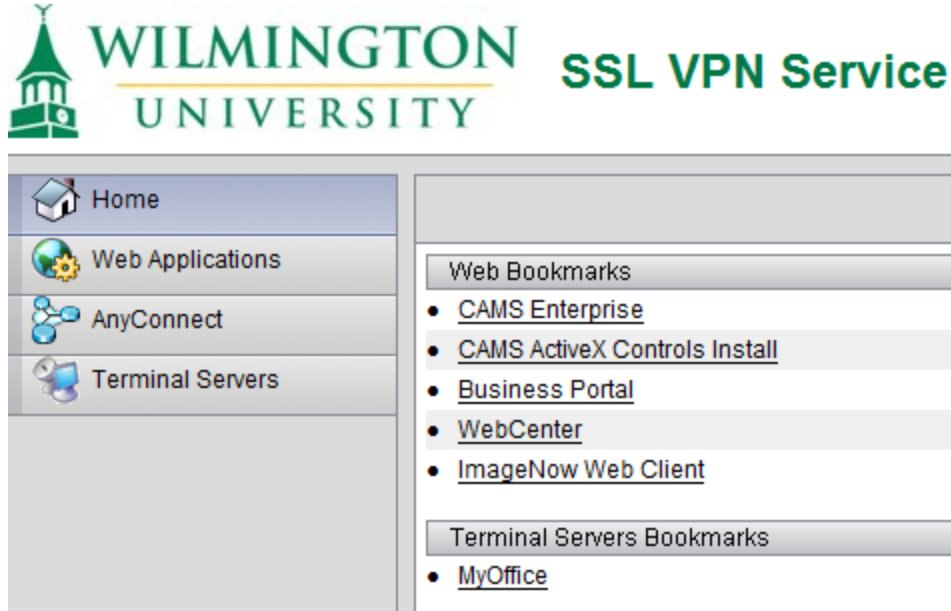
Login

Please enter your username and password.

USERNAME:

PASSWORD:

4. A successful login will take you to the Home screen:



5. Click on the system you wish to access.
- Some systems require Java or ActiveX plugins, so they may or may not work depending on the computer you are on and your permissions on that computer.
 - Internet Explorer indicates the need for an ActiveX installation via a bar that appears at the top of the browser window. The following is a sample:
 - Listing the requirements of each system is beyond the scope of this document.
6. Some links will open in a new browser window. When you are finished with that application, close that window.
7. Some links will open in the current window. A 3-icon navigation bar will appear in the top right of the window. Clicking the house will return you to the Home screen.



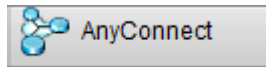
8. **Important:** When you are finished, click Logout at the top right of the Home screen.

Client-based - AnyConnect

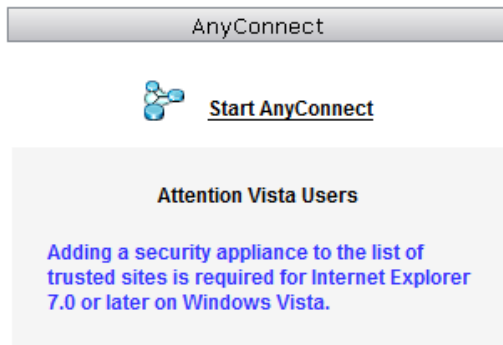
1. Confirm that the computer you are on has internet access
2. Check to see if the AnyConnect client is already installed. It will be in the Start Menu under Cisco.

If it is not installed, *FIRST* follow steps 1- 4 under Clientless Access and *THEN* steps a - f:

- a. To install the AnyConnect client, click the AnyConnect Client link on the Home screen



- b. Windows Vista and Windows 7 users will see a notice about trusted sites. Please follow the instructions to the right of the notice and add https://*.wilmu.edu to the trusted sites before continuing with step c.

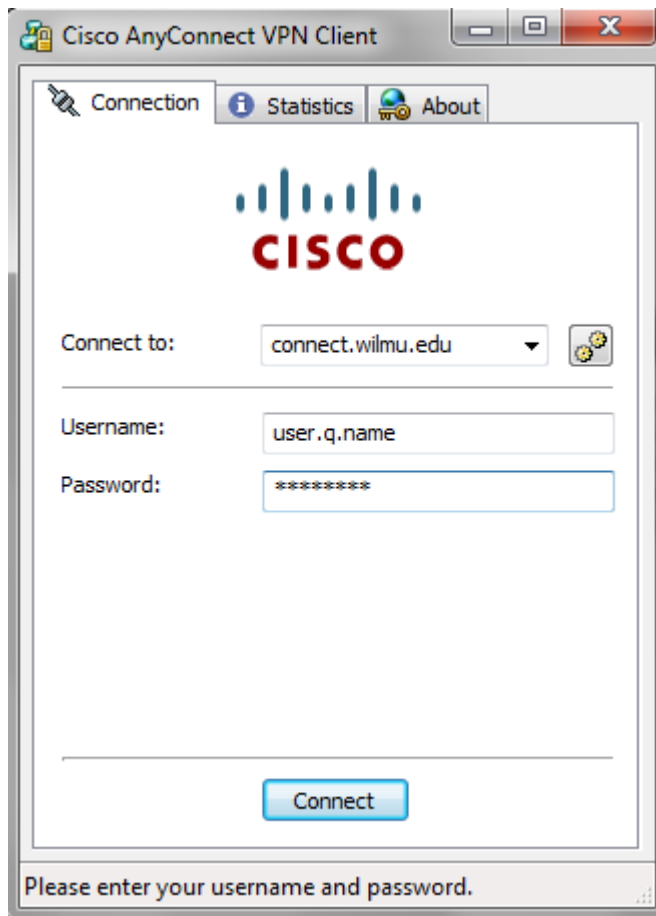


- c. Click the Start AnyConnect link
- d. The AnyConnect client will install and establish a connection to the Wilmington University network.
 - You may be asked to install ActiveX components, please allow these to install.
- e. A successful connection will look as follows:



- f. Subsequent connections will not require steps a - f. Continue with step 5.

3. Launch the Cisco AnyConnect client by clicking on the Start Menu entry.
4. Enter your credentials and click Connect



5. Your system is now securely connected to the Wilmington University network and you will have access to most of the University systems you normally would if you were directly connected on campus.
6. An icon in the task bar near the time will indicate your connection status. You can right-click this icon and choose Disconnect to end your session.

