

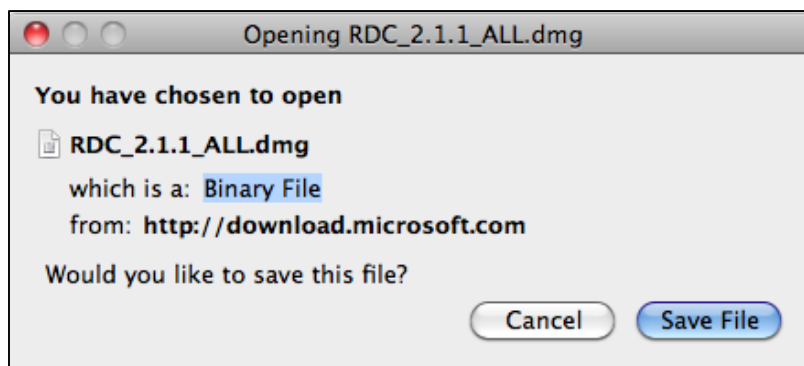
# Tutorial One: Downloading and Installing VMWare View Client (Mac OS X)



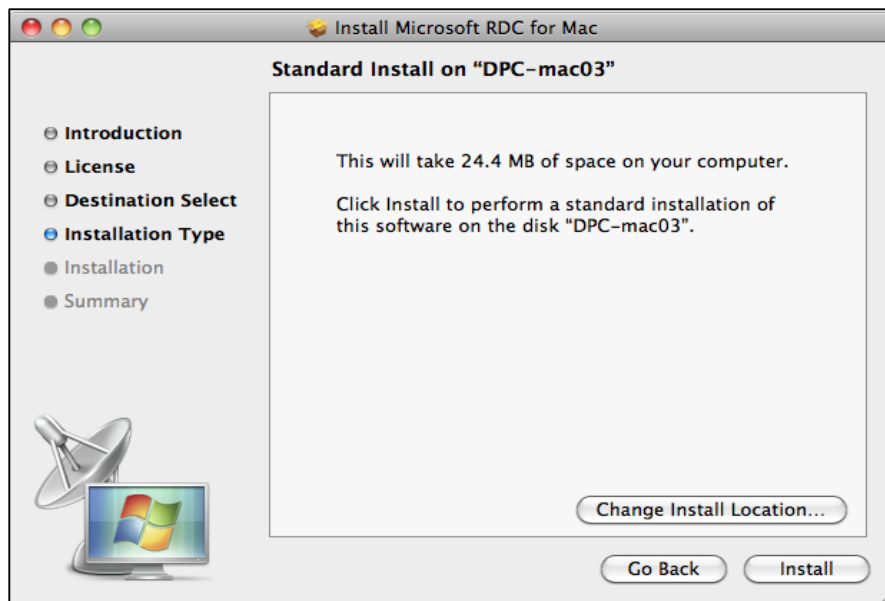
*This tutorial will show how to download and install Microsoft Remote Desktop Connection (RDC) and VMware View Client and on a Mac OS X to access SPSS remotely*

## Step One

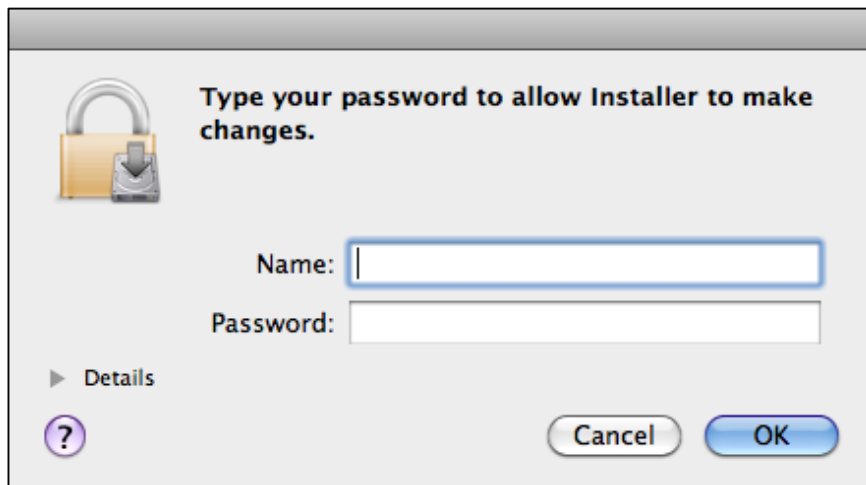
1. Download and Install Microsoft Remote Desktop Connection (RDC):  
[Download Microsoft RDC - Mac OS X](#)
2. Choose to **Save File**.



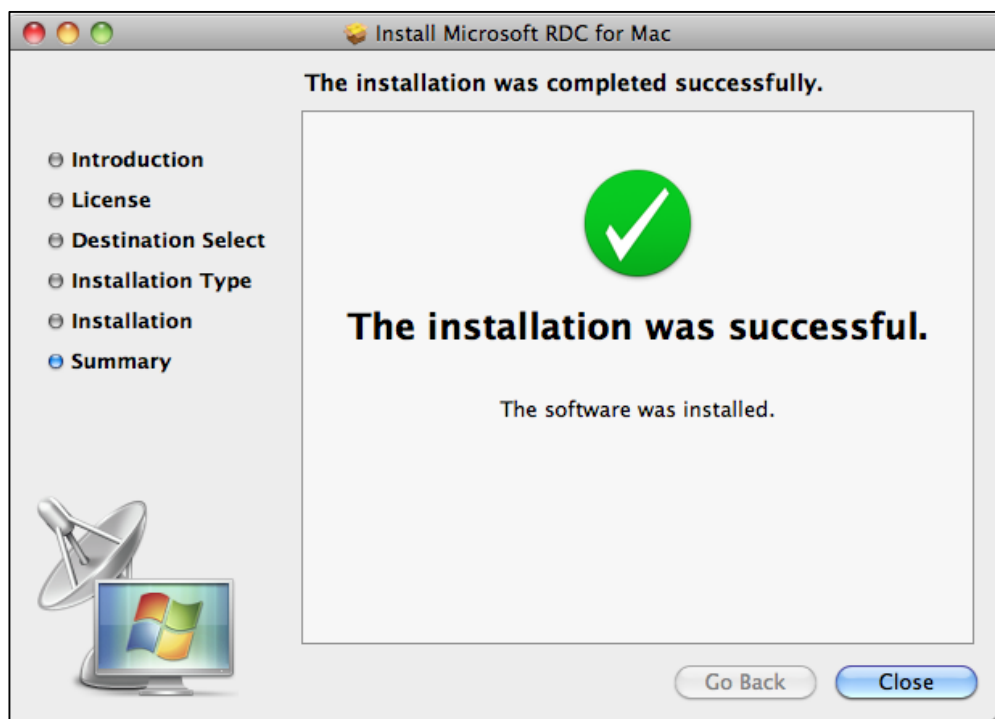
3. Open the **dmg file** and double click on the **RDC installer package**.
4. Click **Continue** and **accept** and **agree** to all licensing prompts.
5. Click **Install**.



6. If prompted, enter your system credentials.

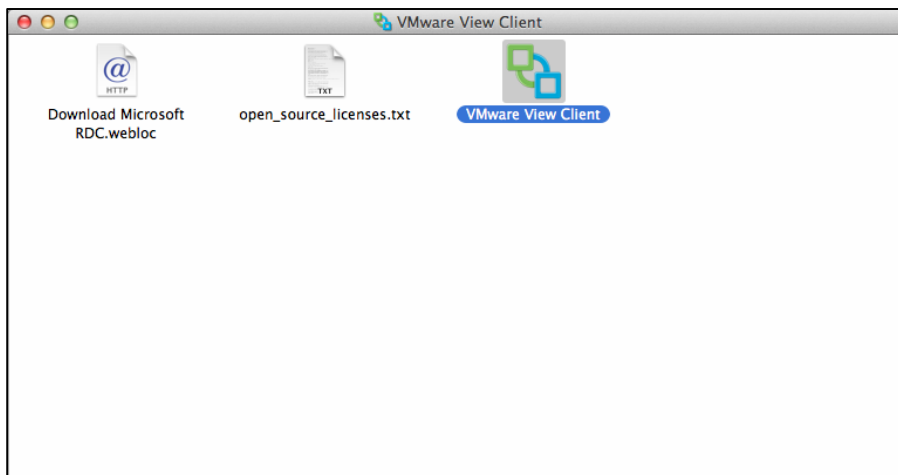


7. Click close when the installation is complete.



## Step Two

1. Download and Install VMWare View Client: [Download VMWare View Client - Mac OS X](#)
2. **Open** and **click** the downloaded file (VMWare View Client). It will open the Finder window shown below:

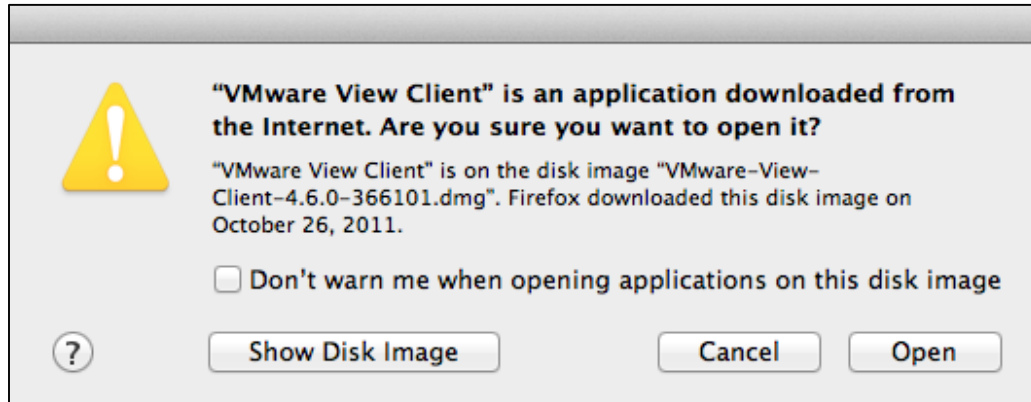


3. **Click** and **drag** the VMware View Client (blue) icon and place it into the Applications folder (red) to install the application.

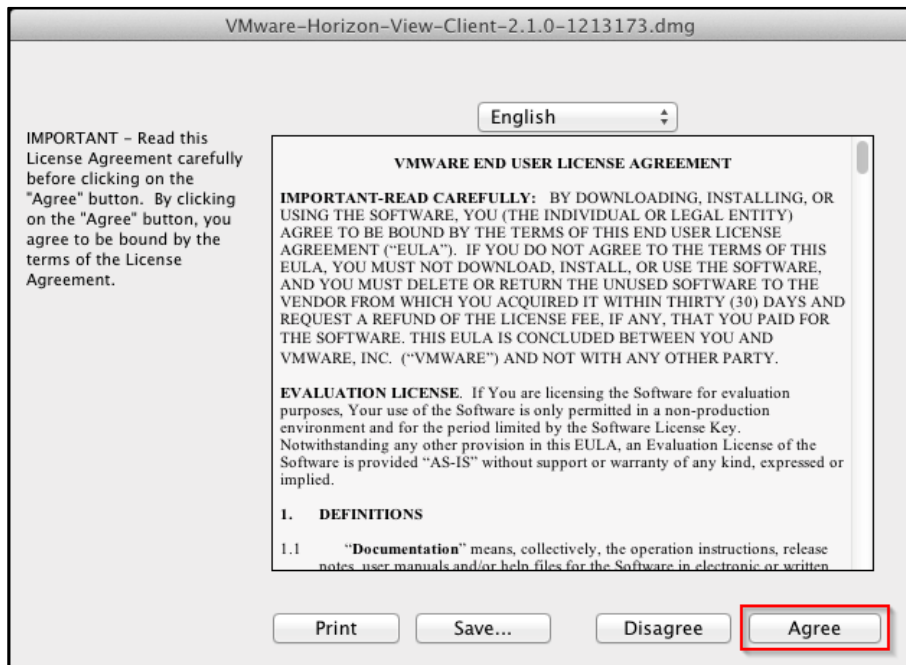


4. **Double click** the Applications folder (red). You will see VMware View Client in your Applications folder. **Double click** the icon to open VMware View Client. You may be prompted to enter your password in order to complete the installation.

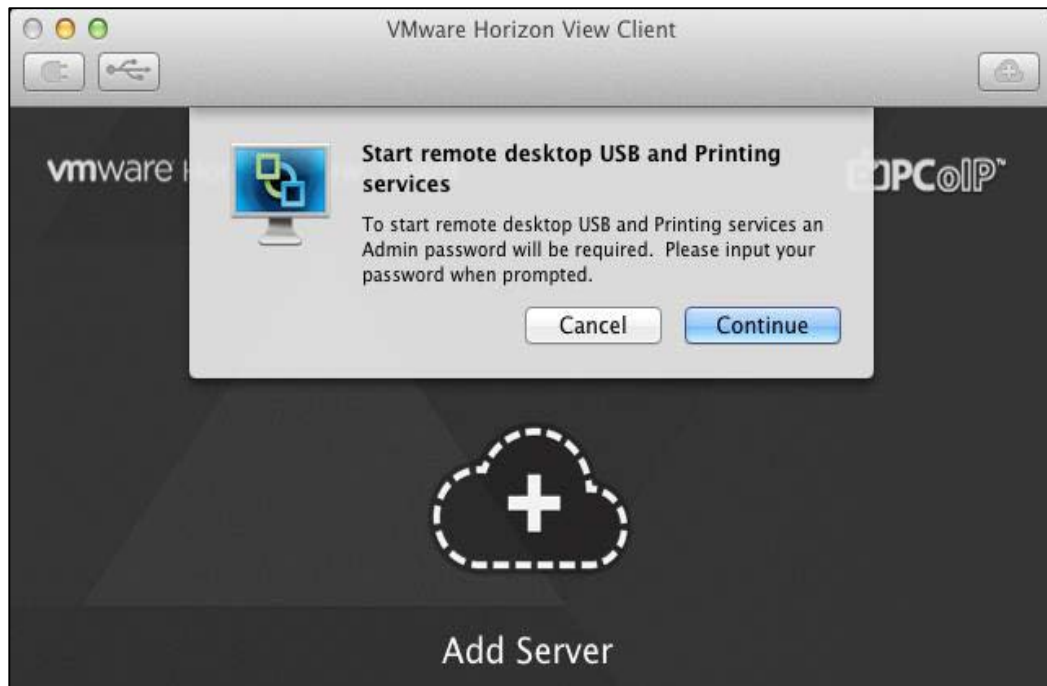
If presented with the below warning, click **“Don’t warn me when opening applications on this disk image”** and then click **Open**.



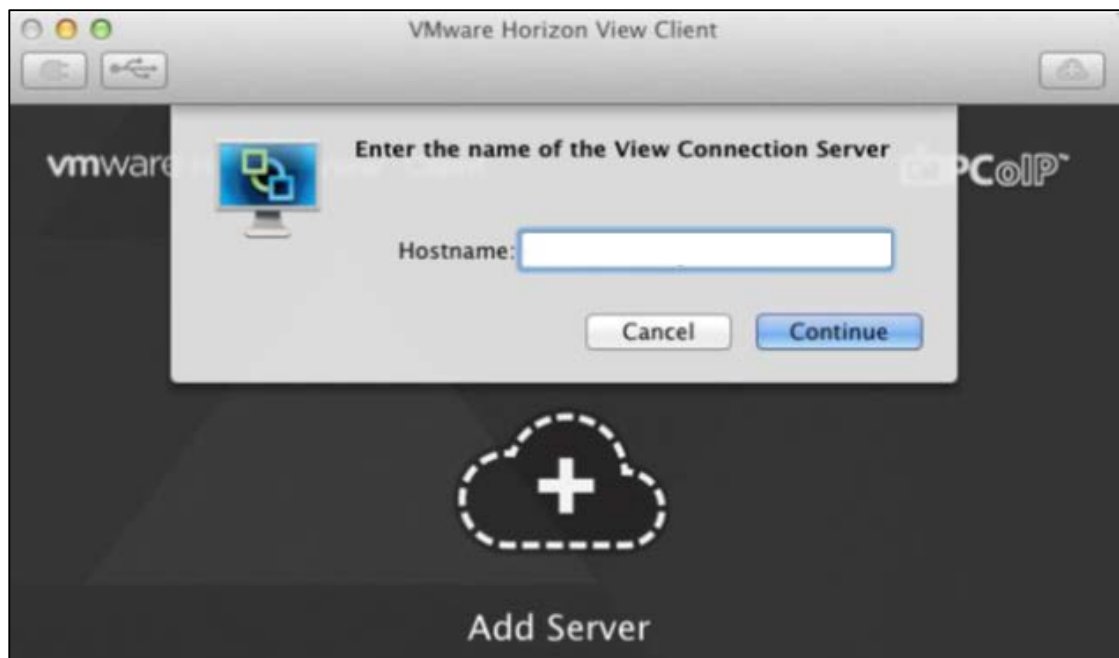
5. **Read** and **accept** the terms in the License Agreement and then click **Agree**.



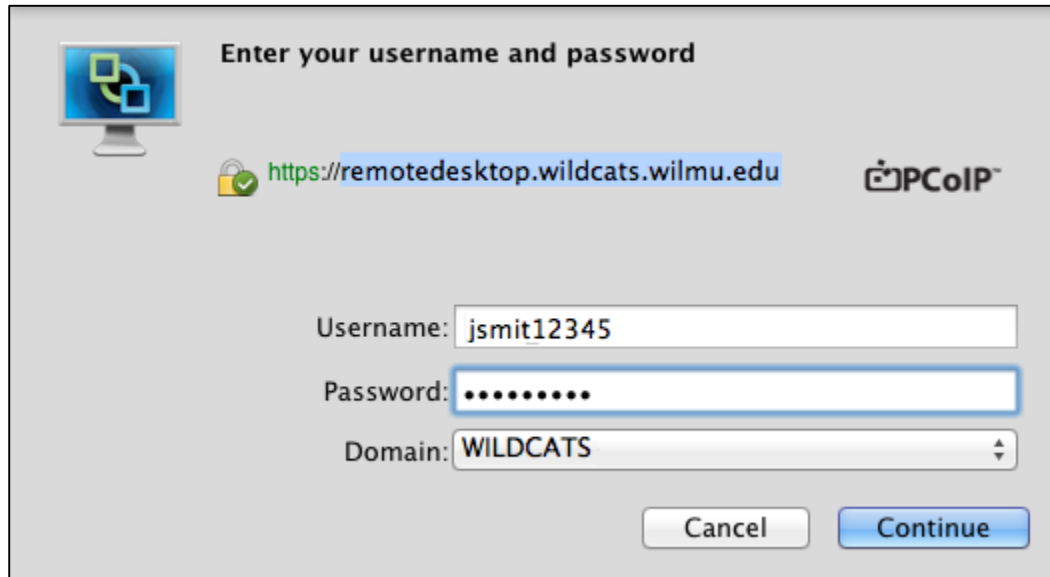
6. When the application first opens you will see the window shown below. Click **continue**.





7. Now click the **Add Server** cloud button in the center of the window. In the **Hostname:** field, type **remotedesktop.wildcats.wilmu.edu** and click **Continue**.



8. You will then be prompted for your username and password in the following window. In the **Username** and **Password** fields enter your **WebCampus credentials**. The **Domain** should be set to **WILDCATS**. Then click **Continue**.



Enter your username and password

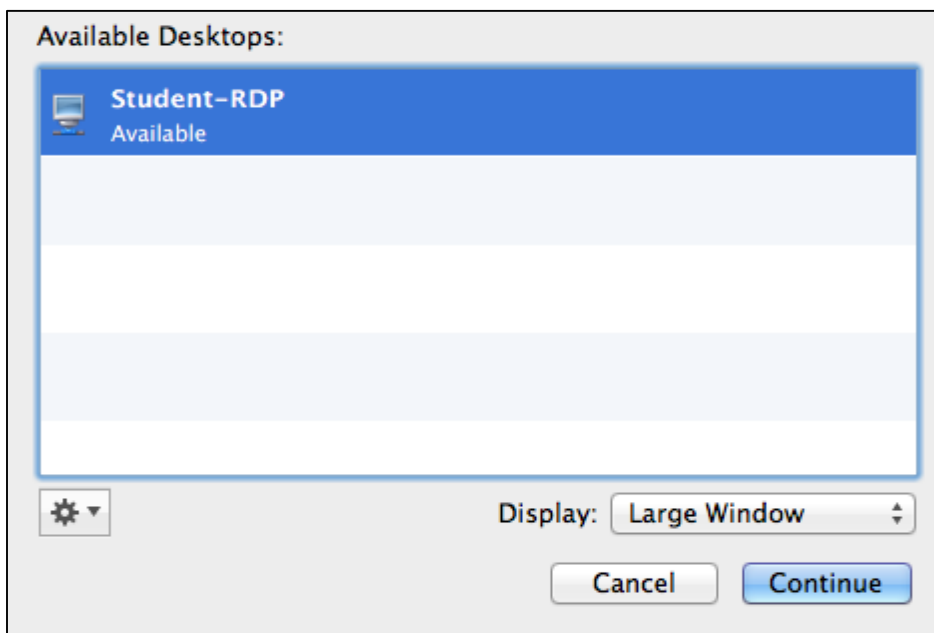
 <https://remotedesktop.wildcats.wilmu.edu> 

Username:


Password:


Domain:

9. Once the login process is complete click the **Student-RDP** desktop and click **Connect**.

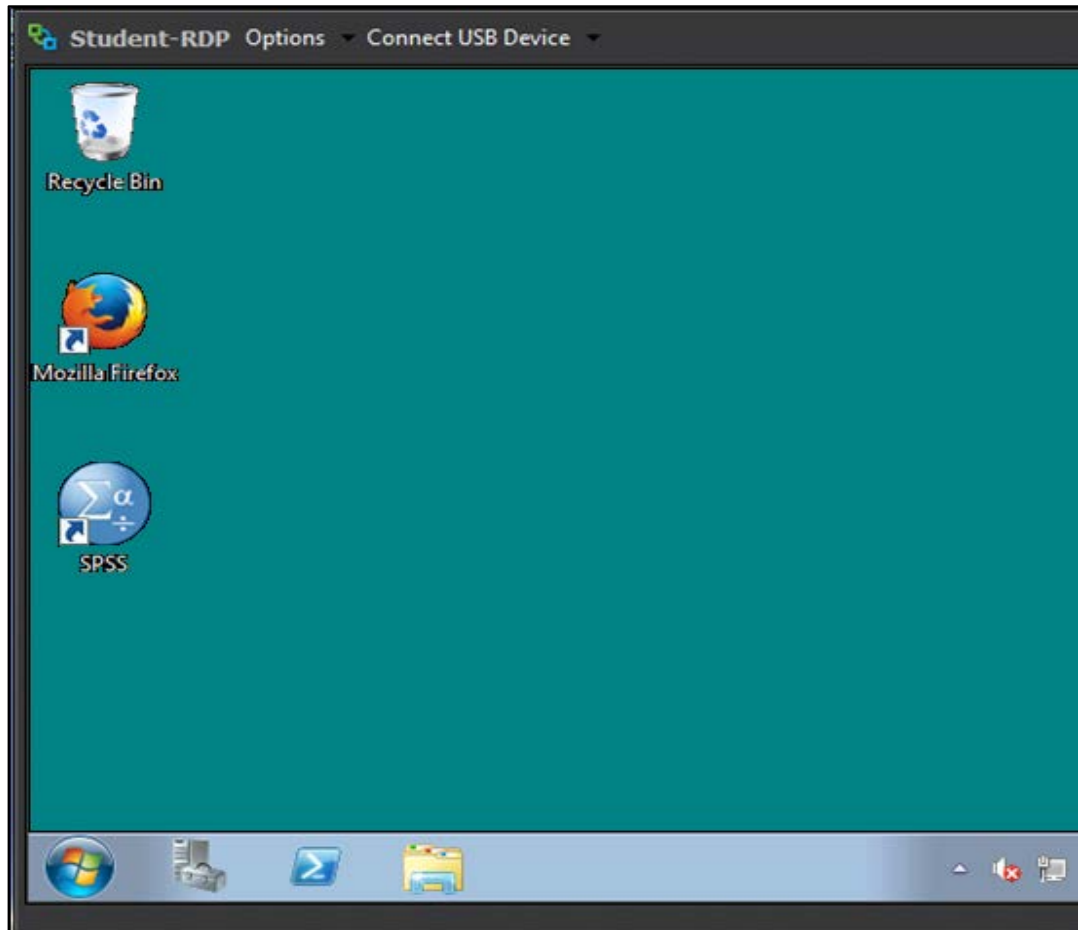


Available Desktops:

 **Student-RDP**  
Available

 Display:

10. Once fully connected you will see the SPSS sever appear:



*Now that you have successfully downloaded and installed Microsoft Remote Desktop Connection and VMWare View Client to access the SPSS server, you will need to know the basics of how to use SPSS and how to upload your work to Blackboard. Please go to Tutorial Two to find out more.*