

# Tutorial One: Downloading and Installing VMWare View Client (Windows)



*This tutorial will show how to download and install VMWare View Client on a Windows operating system (PC) to access SPSS remotely*

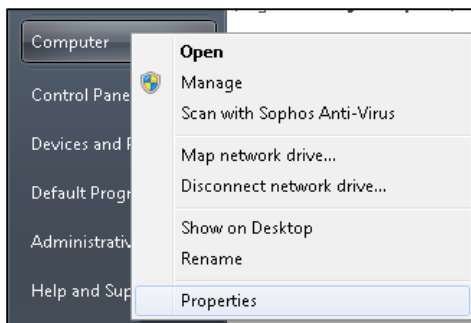
## Step One

Determine whether you are using a 64 or 32-bit operating system:

1. Click the **Start Menu**.

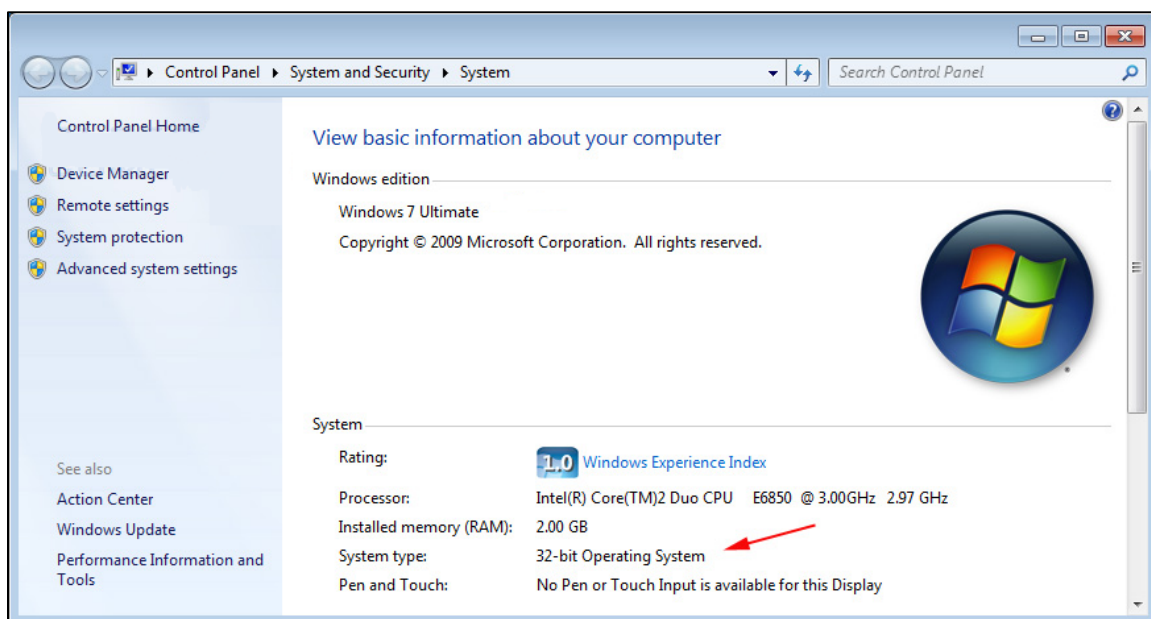


2. Right click **Computer** and choose **Properties**.



3. If "64-bit Operating System" is listed next to System type, you're running the 64-bit version of Windows.

If "32-bit Operating System" is listed next to System type, you're running the 32-bit version of Windows.

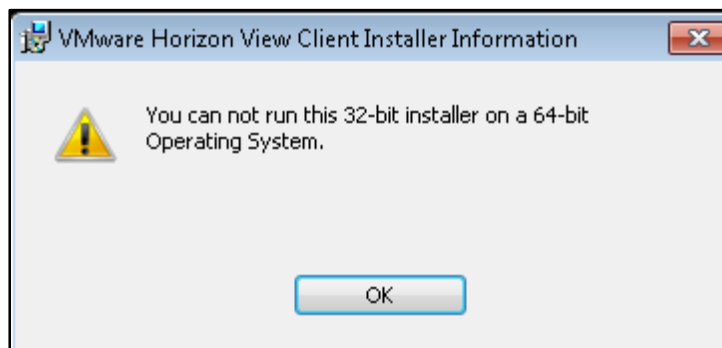


## Step Two

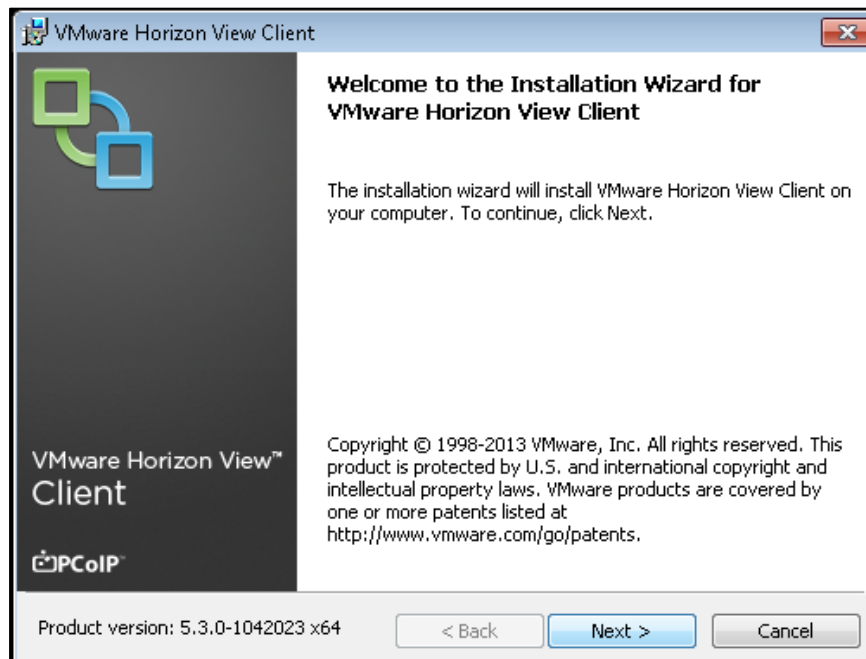
Download and install the appropriate VMWare view client for your Operating System. Choose one of the links below:

- 64-bit Operating System: [Download VMWare View Client - 64-bit Windows](#)
- 32-bit Operating System: [Download VMWare View Client - 32-bit Windows](#)

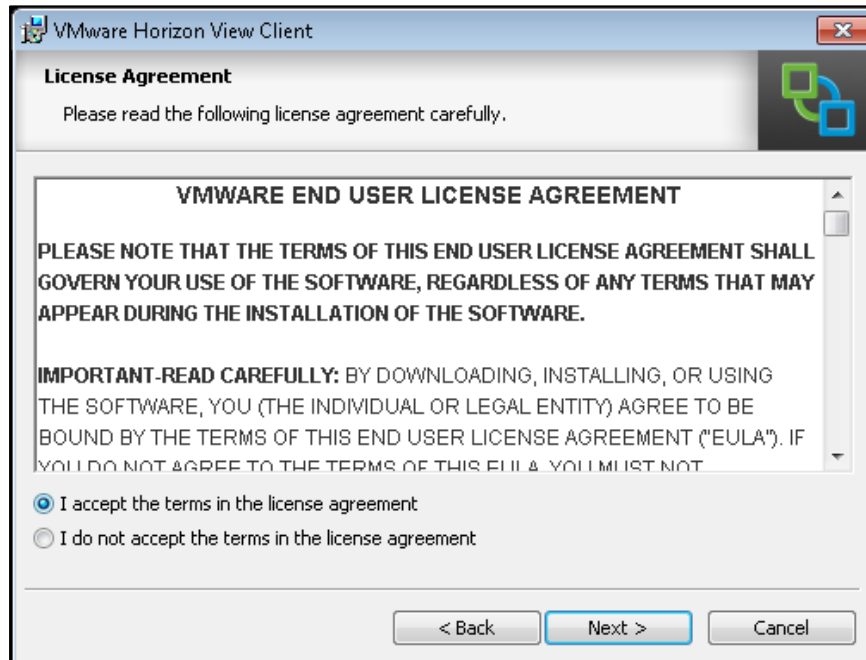
**NOTE:** *If you attempt to install the wrong installer (64-bit or 32-bit) you will receive an error stating it is the wrong version for your Operating System. If this occurs simply choose to download the other installer.*



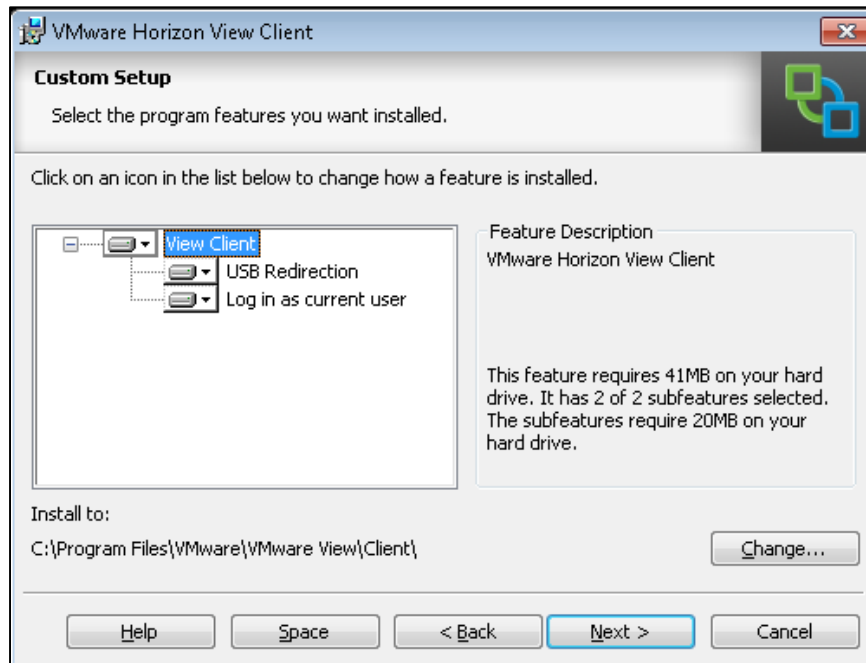
1. Once the installation process begins, click **Next**.



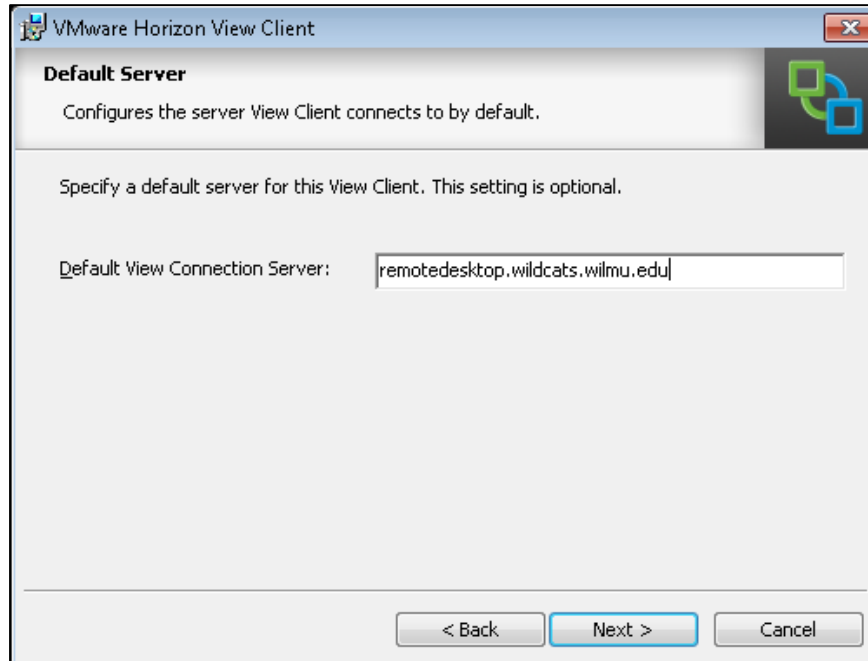
2. **Read** and **accept** the terms in the License Agreement and then click **Next**.



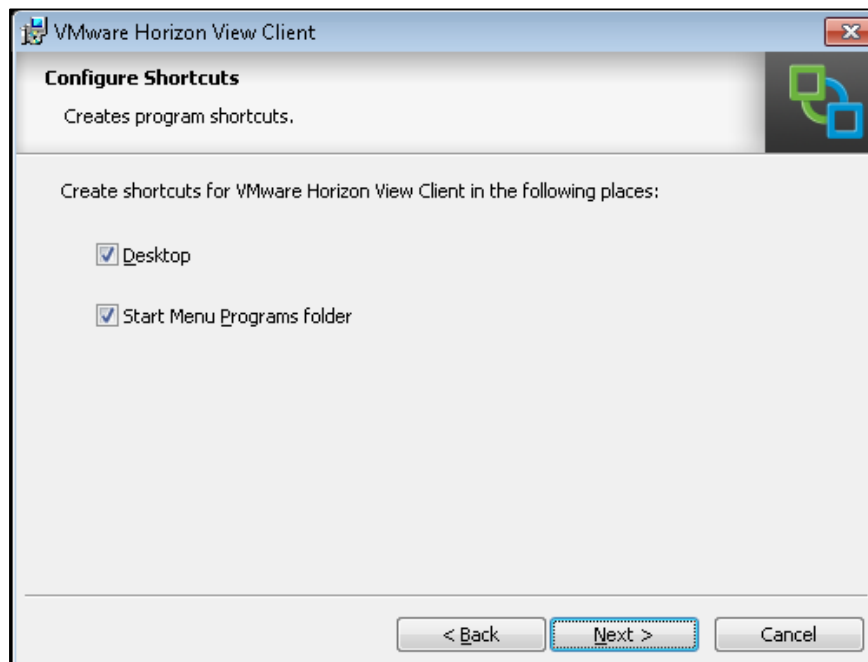
3. Click **Next** to use the Custom Setup.



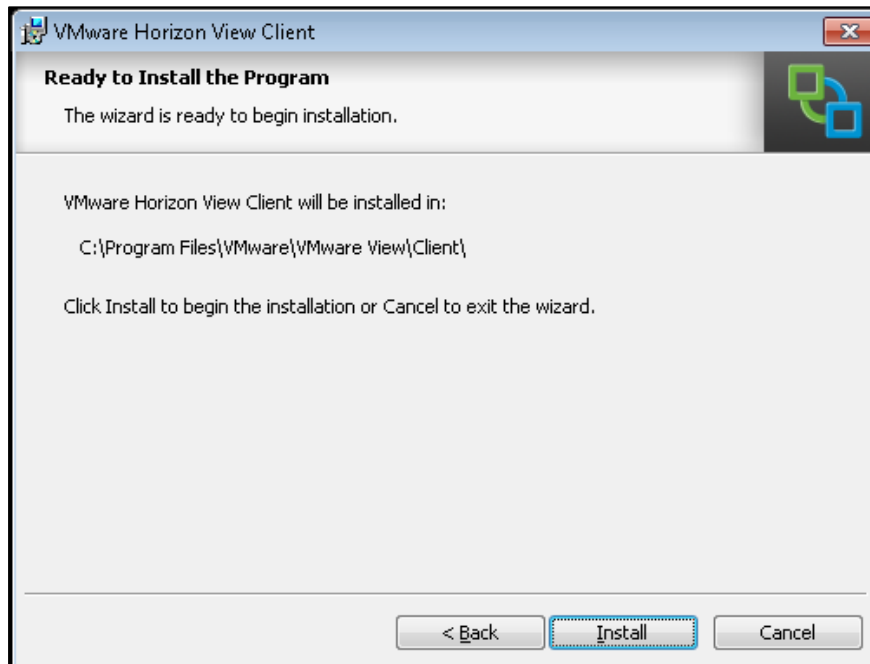
4. In the Default View Connection Server field, type **remotedesktop.wildcats.wilmu.edu** and click **Next**.



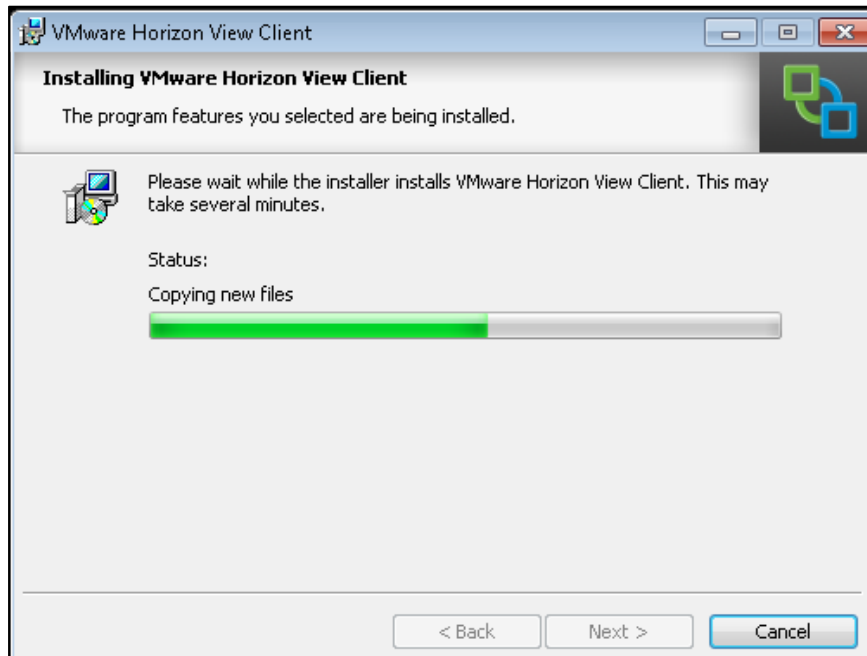
5. Click **Next** to Configure Shortcuts on your Desktop and Start Menu Programs folder.



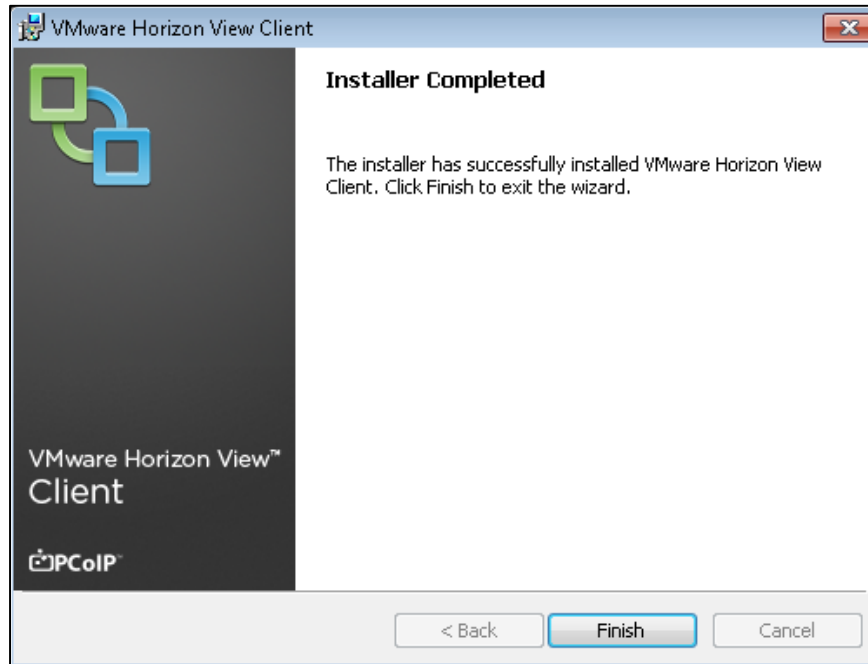
6. Click **Install** as the wizard is ready to begin installation.



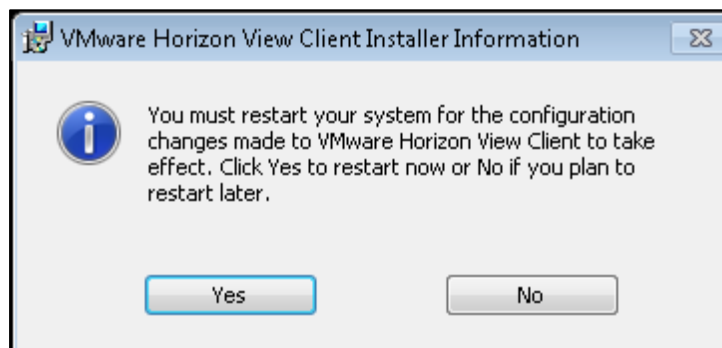
The install will progress (this may take a couple of minutes):



7. Once the Installer Completed successfully, click **Finish**.



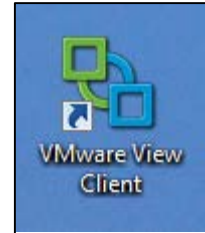
8. Now you must click **Yes** to restart your system so the configuration changes made to VMWare View Client can take effect.



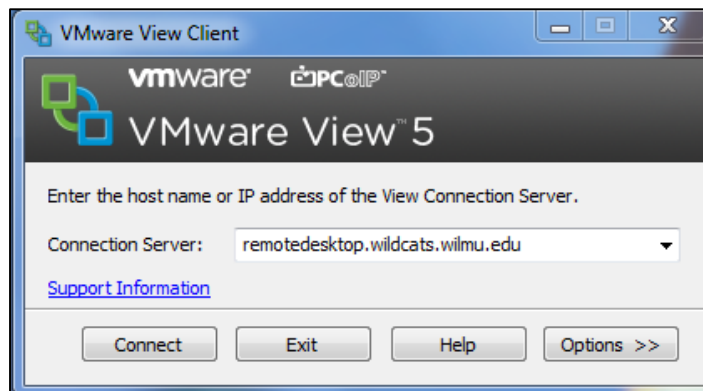
### Step Three

Once VMWare View Client is installed, you may access the SPSS server by following the below steps:

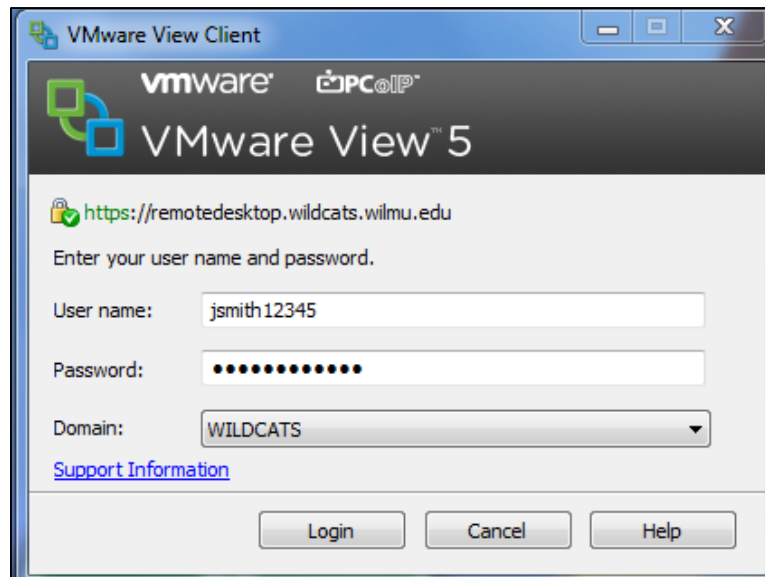
1. Go to your **desktop** and double click the VMWare View Client shortcut to start the program.



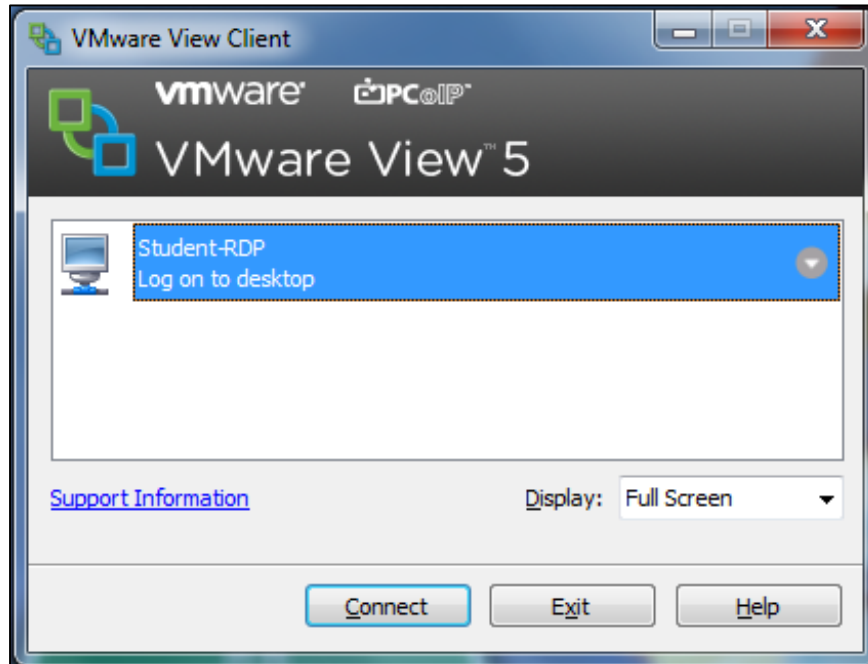
2. In the VMWare View Client Connection Server field, make sure the Connection Server is set to **remotedesktop.wildcats.wilmu.edu** and then click **Connect**.



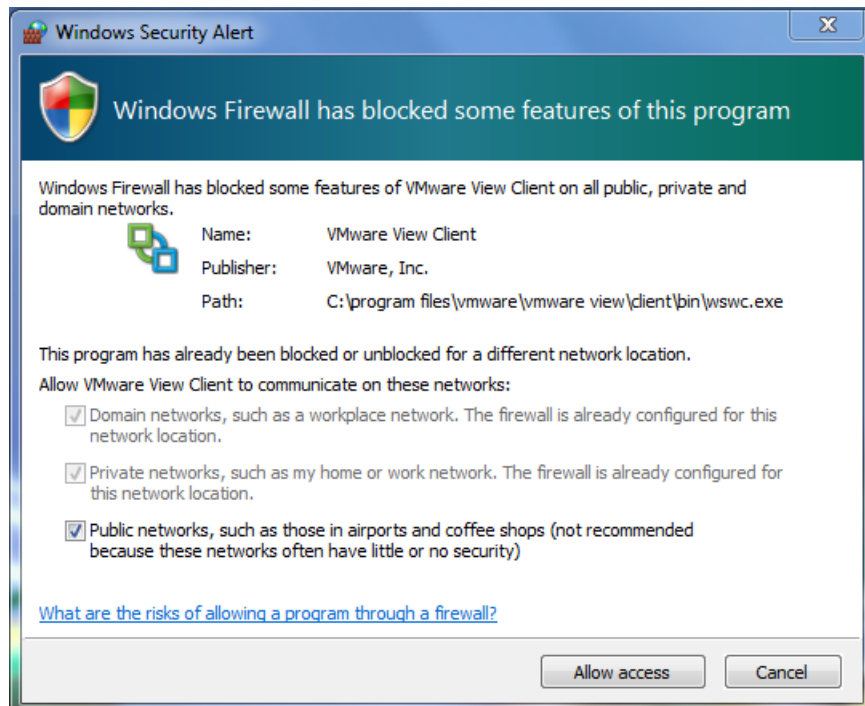
3. In the **User name** and **Password** fields enter your **WebCampus credentials**. The **Domain** should be set to **WILDCATS**. Then click **Login**.



- Once the login process is complete, click **Student-RDP** and then choose **Connect** to login to the SPSS server.

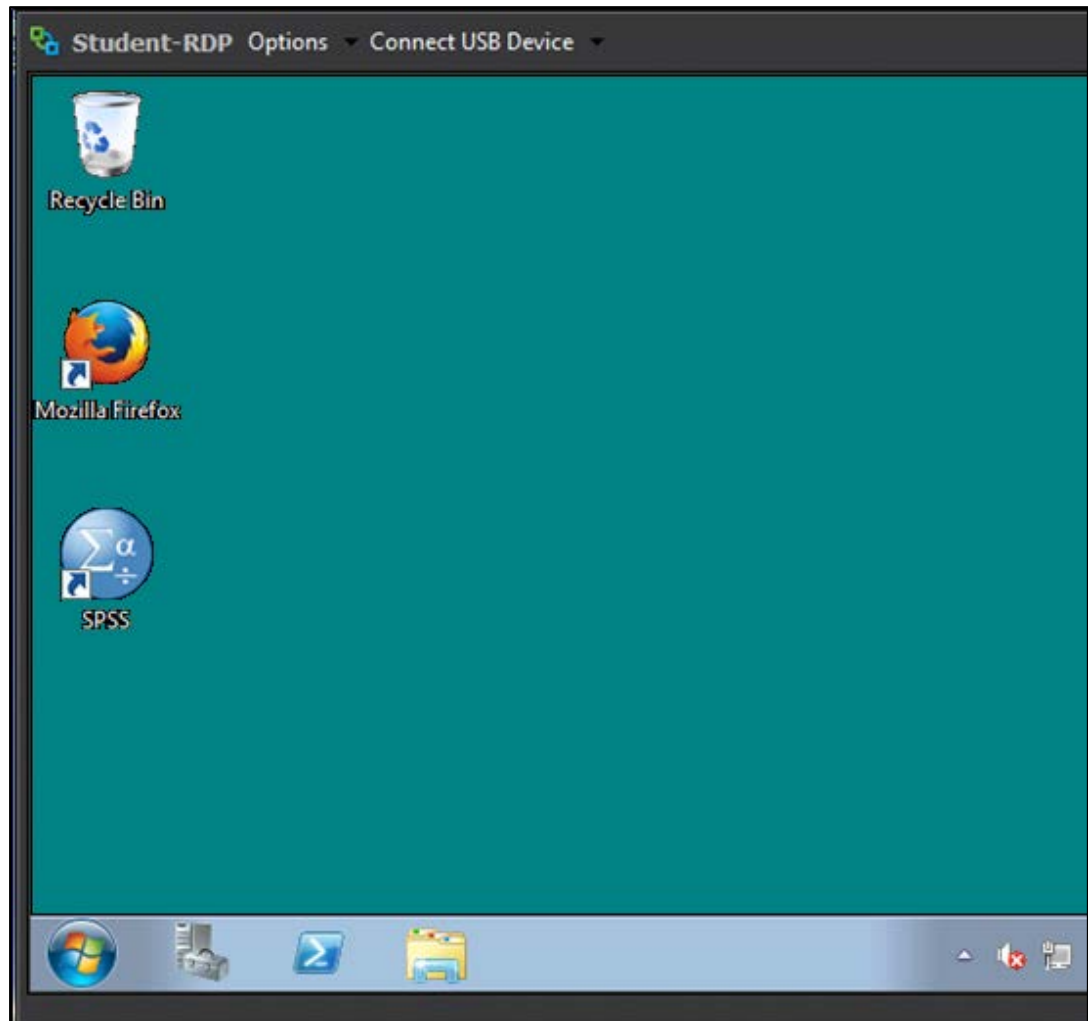


- After selecting **Connect** you may see the below Windows Security Alert. Make sure you choose to **Allow access**.





6. Once fully connected you will see the SPSS sever appear:



*Now that you have successfully downloaded and installed VMWare View Client to access the SPSS server, you will need to know the basics of how to use SPSS and how to upload your work to Blackboard. Please go to Tutorial Two to find out more.*